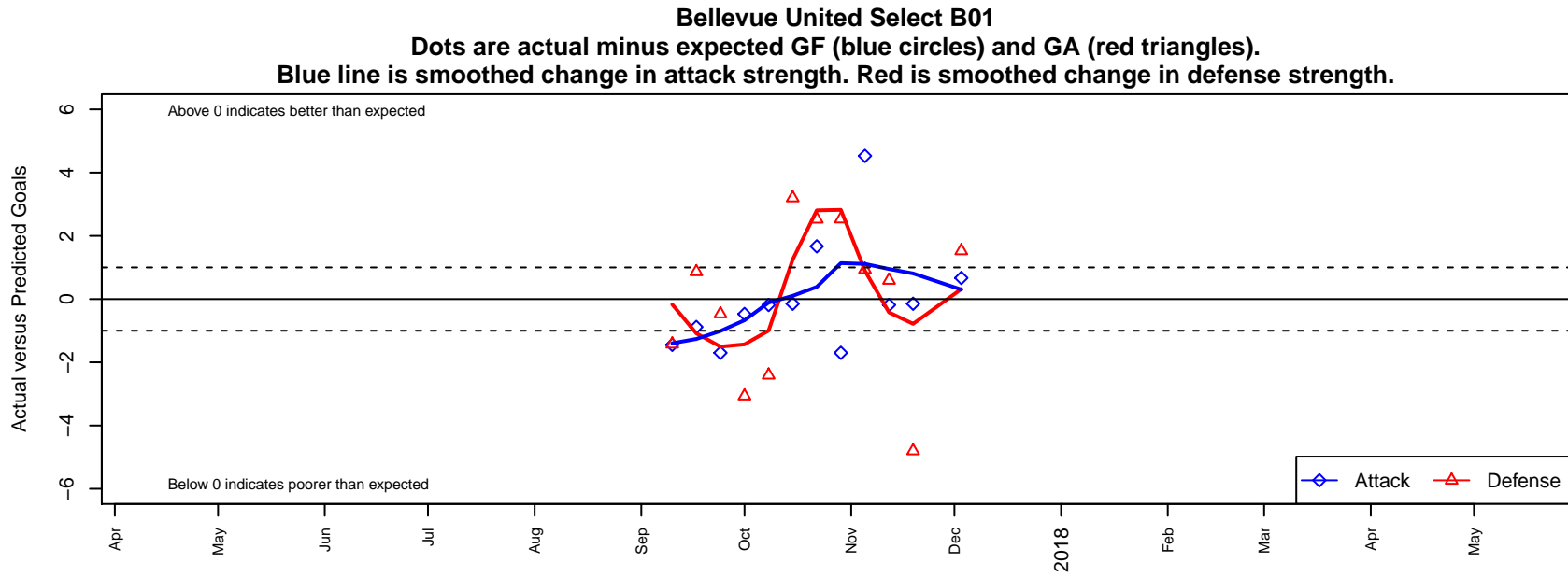


Bellevue United Select B01

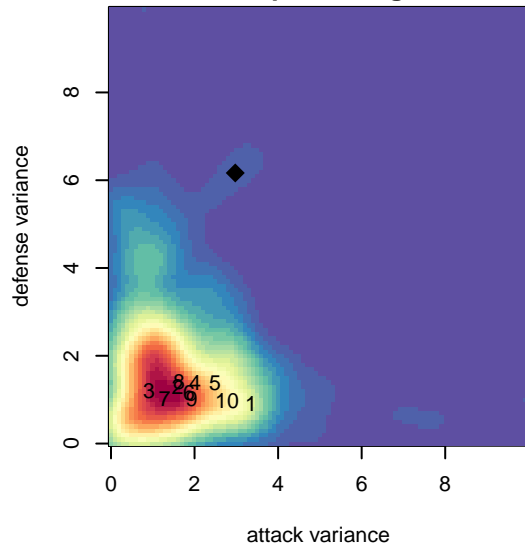
Bellevue, WA
B01 total strength=1168
attack=7.41 defense=1.73
fall league = NPSL DIVISION 2 (01) U17
notes= Mulfinger 2016

alt names used:
BUFC B01 Vaughn

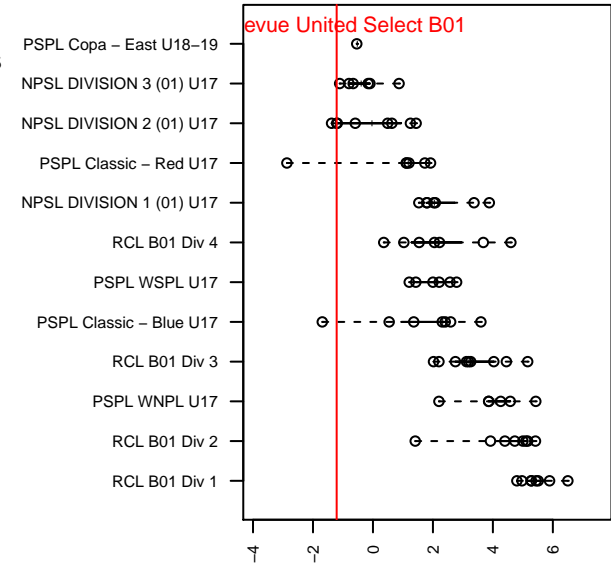
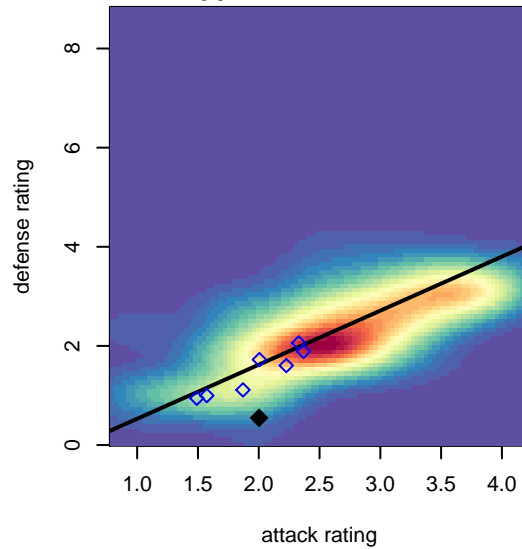
Venues played:
2017 NPSL DIVISION 2 (01) U17



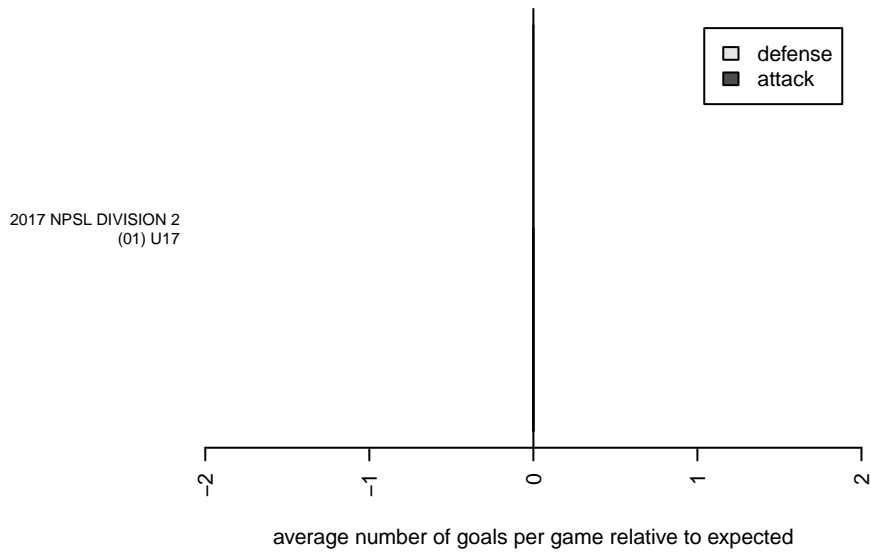
**attack and defense variance (black dot)
relative to other teams
and top 10 in region**



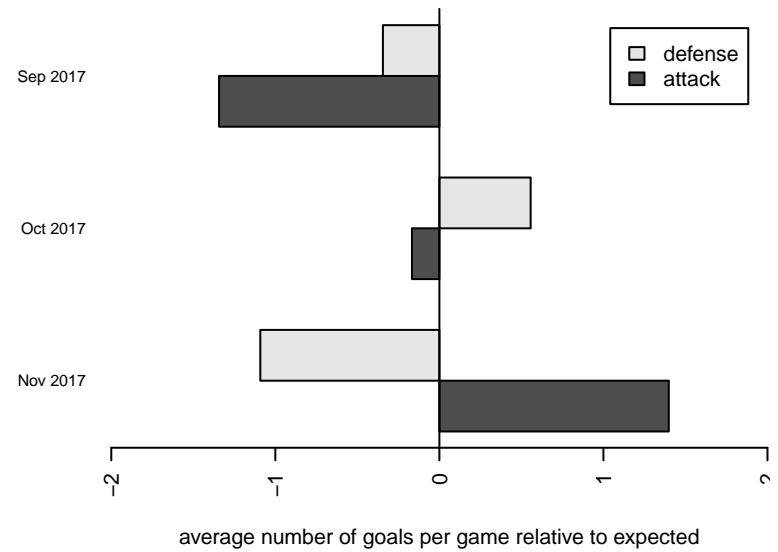
**attack and defense rating
relative to others at age
and all opponents in last 13 months**



Performance relative to 13 month average



Performance relative to 13 month average



date	home		away		venue	pred.home	pred.away
2017-12-03	Bellevue United Select B01	2	PSA Force Black B01	3	2017 NPSL DIVISION 2 (01) U17	1.33	4.53
2017-11-19	FWFC Select 1 B01	11	Bellevue United Select B01	1	2017 NPSL DIVISION 2 (01) U17	6.20	1.15
2017-11-12	Bellevue United Select B01	2	Newport FC Barca B01	3	2017 NPSL DIVISION 2 (01) U17	2.19	3.59
2017-11-05	Bellevue United Select B01	7	NK Havoc B01	2	2017 NPSL DIVISION 2 (01) U17	2.47	2.93
2017-10-29	Seattle United Shoreline Blue B01	0	Bellevue United Select B01	1	2017 NPSL DIVISION 2 (01) U17	2.53	2.70
2017-10-22	PSA Force Black B01	2	Bellevue United Select B01	3	2017 NPSL DIVISION 2 (01) U17	4.53	1.33
2017-10-15	Bellevue United Select B01	1	FWFC Select 1 B01	3	2017 NPSL DIVISION 2 (01) U17	1.15	6.20
2017-10-08	Newport FC Barca B01	6	Bellevue United Select B01	2	2017 NPSL DIVISION 2 (01) U17	3.59	2.19
2017-10-01	NK Havoc B01	6	Bellevue United Select B01	2	2017 NPSL DIVISION 2 (01) U17	2.93	2.47
2017-09-24	Bellevue United Select B01	1	Seattle United Shoreline Blue B01	3	2017 NPSL DIVISION 2 (01) U17	2.70	2.53
2017-09-17	Bellevue United Select B01	0	BIFC Blue B01	5	2017 NPSL DIVISION 2 (01) U17	0.88	5.86
2017-09-10	FWFC Select B01	7	Bellevue United Select B01	0	2017 NPSL DIVISION 2 (01) U17	5.57	1.45